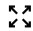






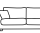





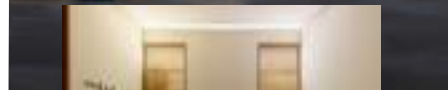


**ZMK**  
MARKETING



# ZMK SMART HOMES

-  10 Marla
-  4 Bedroom
-  35 x 65
-  4 Bathroom
-  2 Living Room
-  3433 SFT
-  Gated Society
-  2 Drawing Rooms
-  Servant Bed with attached Bath
-  Balcony
-  Open To Sky Patio



Experience the epitome of luxury and space with our stunning 10 Marla modern-designed homes. Elevate your lifestyle today by claiming yours!



**0309-5111243 | 0303-8553558**

info@zmkmarketing.com

**Office**

House 1064, Street 32, D Block, Topcity-I, Islamabad

[www.zmkmarketing.com](http://www.zmkmarketing.com)

# EXPERIENCE ZMK SMART HOMES

---



ZMK Homes, an innovative project by ZMK Marketing, offering 5 and 10 marla villas in University Town, Islamabad. Designed to provide affordable luxury, this project caters to various segments of society seeking modern living solutions without compromising on quality or features. Each villa offers residents modern conveniences and comfort seamlessly integrated into their daily lives. The homes will be constructed using only the highest quality materials, adhering to best practices and SOPs to ensure durability and sustainability. ZMK Homes stands out due to its prime location, providing easy access to all major landmarks in Islamabad.

# LOCATION



SCAN FOR PIN LOCATION

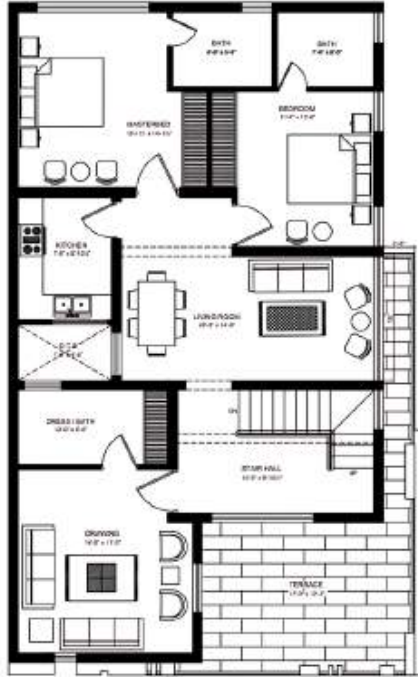




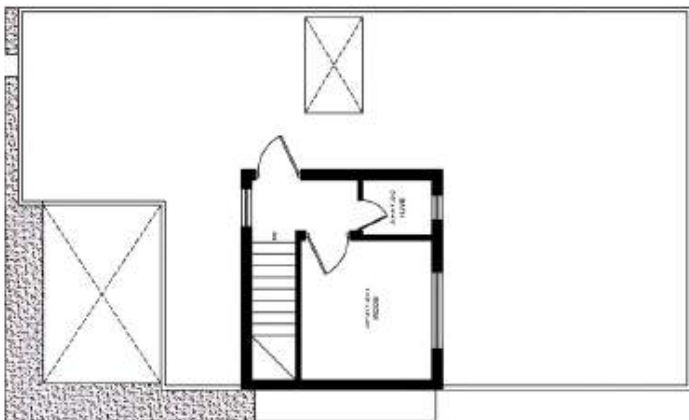
# LAYOUT PLAN



**GROUND FLOOR PLAN**



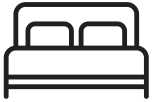
**FIRST FLOOR PLAN**



**MUMTY PLAN**



## G R O U N D F L O O R



2 bedrooms with attached bathrooms.



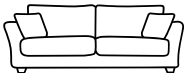
1 Kitchen



TV Lounge



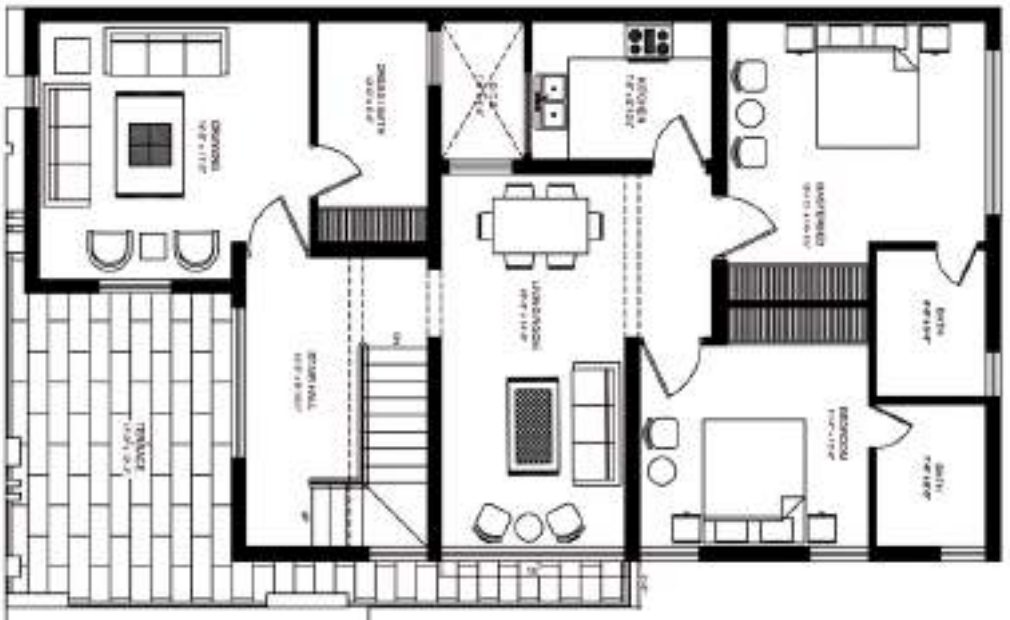
Car Porch (2 cars)



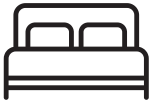
Drawing Room



Powder room



## FIRST FLOOR



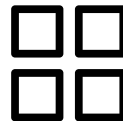
2 bedrooms with attached bathrooms.



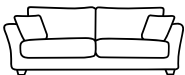
1 Kitchen



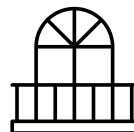
TV Lounge



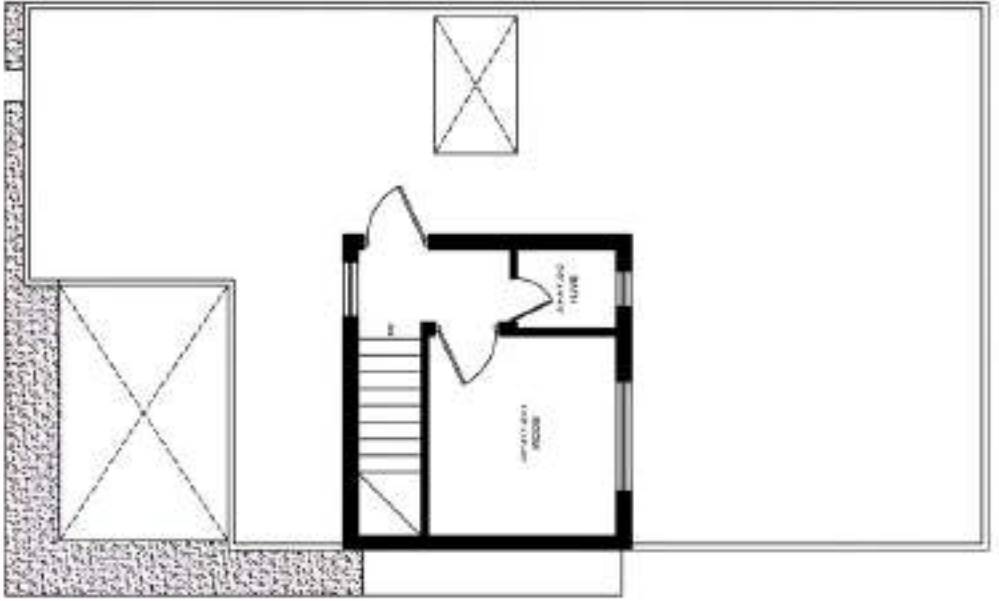
Open To Sky



Drawing Room with bathroom

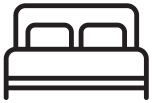


Terrace



**M U M T Y**

---



Servant room



Bathroom

# FEATURES & AMENITIES



DOUBLE UNIT HOUSE



SOLAR POWERED HOMES (OPTIONAL)



SECURED HOUSING SOCIETY



GATED COMMUNITY



AIRPORT 7 MINUTES AWAY



ISB-LHR ISB-PWR MOTORWAY 2 MINUTES AWAY



EXCLUSIVE VILLA COMMUNITY



ADJACENT TO EIGHTEEN HOUSING SOCIETY



20 MINUTES FROM ZERO POINT ISLAMABAD



METRO STOP 5 MINUTES AWAY



KASHMIR HIGHWAY 2 MINUTES AWAY